



Sustainable Water Integrated Management (SWIM) Support Mechanism

**APPLICATION FOR THE PARTICIPATORY IRRIGATION MANAGEMENT (PIM)
AND IRRIGATION MANAGEMENT TRANSFER (IMT) PROCESS M&E SYSTEM**

2.4 Reporting

Project funded by the European Union



Sustainable Water Integrated Management (SWIM) Support Mechanism



APPLICATION FOR THE PARTICIPATORY IRRIGATION MANAGEMENT (PIM) AND IRRIGATION MANAGEMENT TRANSFER (IMT) PROCESS M&E SYSTEM

For every hierarchical level you can get the report to display the data, indicators, results and scores: this greatly facilitates the interaction with the system, regional and national level, and makes possible an estimate of the expected results.

The ability to export data, makes also possible create charts and reports in external programs



Currency setting and conversion

Currency setting and conversion

ID: (Nuovo)

Data of collection: 31/01/2014 12:00:00

Currency description:
ID: internal code
CODE: international code

ID	CODE	CURRENCY NAME
1	USD	Dollar
2	EUR	Euro
3	JOD	Jordanian Dinar
4	LBP	Lebanese Pound
5	DZD	Algerian Dinar
6	MAD	Moroccan Dirham
7	TND	Tunisian Dinar

ange ratio value

2006 2007 2008 2009 2010 2011 2012 2013 2014 2015

LIST OF VALUE

It is possible to consult the following web site
angerates.org.uk
title: Cerca



Sustainable Water Integrated Management (SWIM) Support Mechanism



APPLICATION FOR THE PARTICIPATORY IRRIGATION MANAGEMENT (PIM) AND IRRIGATION MANAGEMENT TRANSFER (IMT) PROCESS M&E SYSTEM

Generation of tabular reports

The system not only allows you to store all the data, but also to create tabular reports, by following simple tasks through some wizards

Regional and local office list

REG CODE	REGIONAL NAME	LOC CODE	LOCAL NAME
1 North Directorate			
2		2	North Shouneh (DA 3)
		3	Al-Manshiyyeh Pump Station 14
		4	Sheik Hussein Pump Station 28
		5	Al-Mashare Pump Station 33
		6	Wadi An-Rayyan Pump Station 41
		2	North Shouneh (DA 3, 4)
2 Middle Directorate			
		8	Al-Krayemh Pump Station 55
		-	Abu-Seido Pump Station 50
			Ghor Kabed Pump Station 51
			Ghor Kabed Pump Station 55
			Al-Kafrein
			An-Ram
			Ghor Kabed Pump Station 81
			Al-Khuzbeera
			Mazra'a, Haditha
			Faifa

Page 1 of 1
martedì 27 maggio 2014

MONITORING				EVALUATION			
Outcome	Output	Indicator	Graphical	Score system (total)	Total	Micro score	Comments
A.1 - the implementation of the PIM/IMT program is reported annually	a program database detailing the PIM/IMT program is regularly updated	A.1.1 - existence of a government document detailing the PIM/IMT program's relative priority	0				Score 0 means the activity has been carried out and the output achieved. Score 1 means the output has not been achieved.
OUTCOME A1						2	
A.2 - the PIM/IMT program has been institutionalized for the planning and implementation phases	coordination mechanism is in place	A.2.1 - a coordination mechanism has been established A.2.2 - degree of effectiveness of coordination among the institutions participating in PIM/IMT process A.2.3 - roles and responsibilities of the actors involved are clearly defined with regard to resolution	0 0 0				Score 0 means inputs from different government agencies are properly coordinated, roles are clear and that of assigned a unique. Score between 0 and 2 indicates deficiencies in the coordination and it will be necessary to look for the specific indicators to identify where the deficiencies are. Score 2 means that the coordination is excellent.
OUTCOME A2						6	
A.3 - the PIM/IMT program is supported with financial resources allocated to sustain	a national PIM/IMT Plan with financial and human resources allocated	A.3.1 - a national PIM/IMT plan with financial and human resources allocated A.3.2 (AM) - percentage of the annual budget allocated to the irrigation agency for the PIM/IMT programme with regard to the target two years ago A.3.3 (TRM) - percentage of the total human resources allocated by the irrigation agency to the PIM/IMT programme in the year with regard to two years ago	0 0 0				If the indicator value is 0 the output has been achieved. If the value is 2 the output has not been achieved. The proposed starting system for indicators A.3.2 and A.3.3 is related to the age of the PIM/IMT process. An annual decreasing trend in the allocation of financial and human resources is positive after 2-10 years of the PIM/IMT program, since the more time is transferred the so government resources should be increased, however this may not be true in all cases since during the initial years, the government may transfer the resources constant or even increase them, for this reason it is important to take at the short during a period of at least 3 to 10 years to make a more proper evaluation. The starting system may be modified according to local experience.
OUTPUT A3.1						6	A score of 0 points means that the annual budget with the human resources is a constant according to the needs of the PIM/IMT program, lower values indicated that the need is not to be expected and reasons should be investigated.

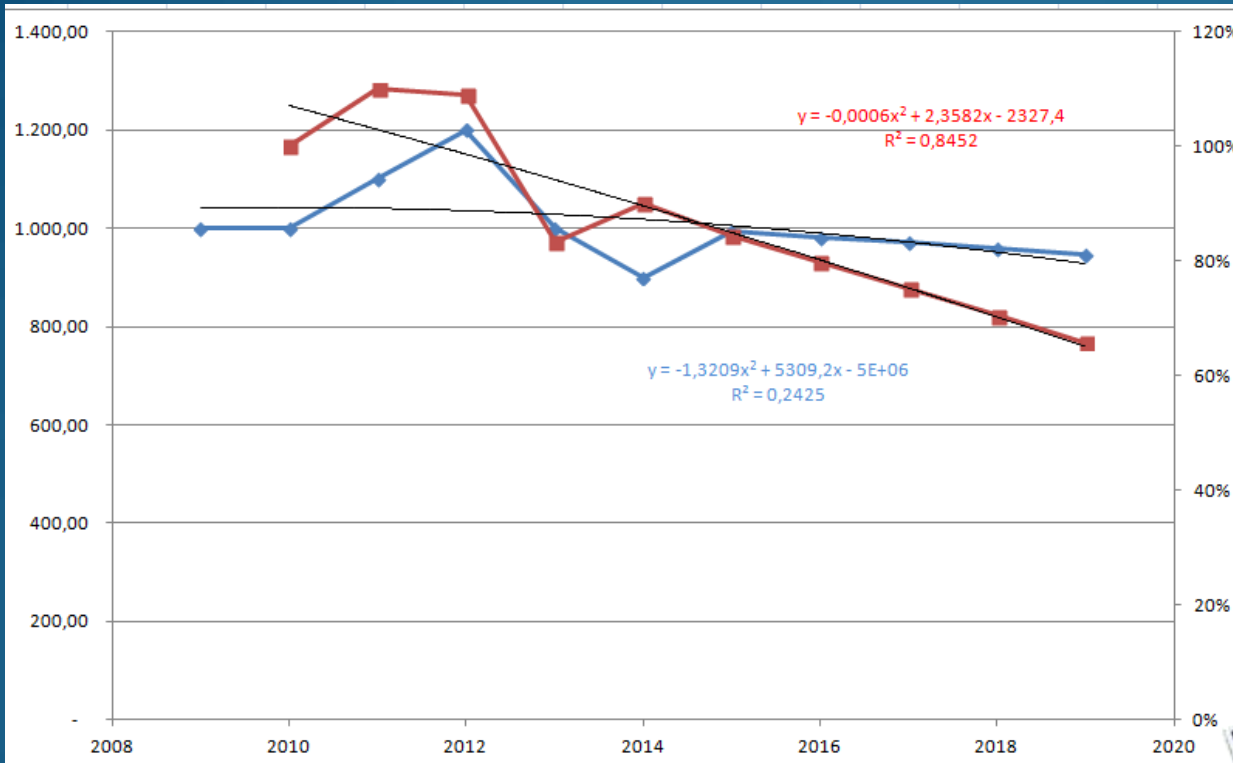


Sustainable Water Integrated Management (SWIM) Support Mechanism

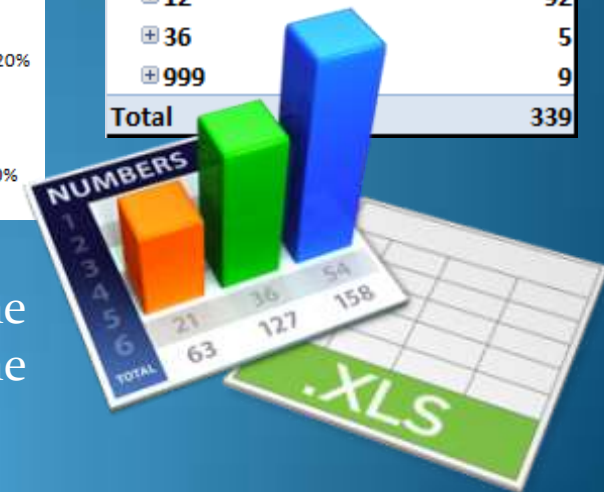


APPLICATION FOR THE PARTICIPATORY IRRIGATION MANAGEMENT (PIM) AND IRRIGATION MANAGEMENT TRANSFER (IMT) PROCESS M&E SYSTEM

Generation of trends



S.O.R. / FREQUENCY / TYPE	Count
National	
+ 12	12
+ 36	42
+ 888	3
Regional	
+ 12	39
+ 36	10
+ 888	14
+ 999	1
Local	
+ 12	95
+ 36	13
+ 888	4
Unrequested	
+ 12	92
+ 36	5
+ 999	9
Total	339



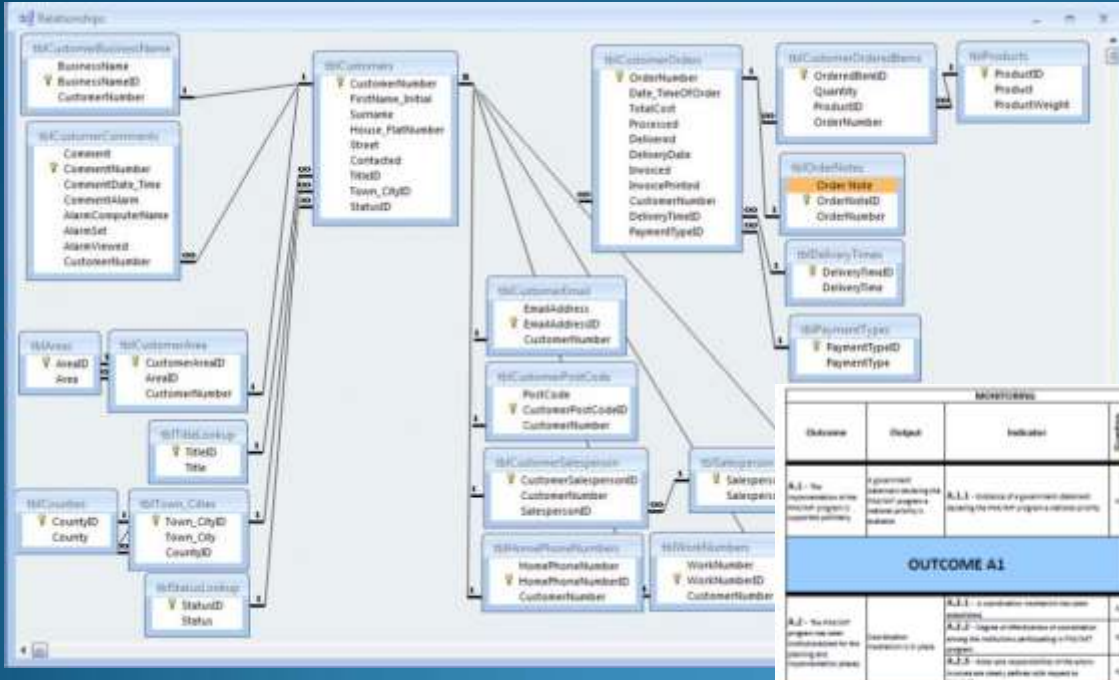
The utility of the system is expressed mainly in the generation of trend graphs that can be really useful in the early stages of decision support and investment planning



Sustainable Water Integrated Management (SWIM) Support Mechanism



APPLICATION FOR THE PARTICIPATORY IRRIGATION MANAGEMENT (PIM) AND IRRIGATION MANAGEMENT TRANSFER (IMT) PROCESS M&E SYSTEM



The graphs and tabular reports produced by the system will help you analyze the trends for all numerical parameters analyzed, entered and calculated

INDICATORS						ENACTMENTS	
Outcome	Output	Indicator	Strength	Score system (0-100)	Weight	Evaluation	Comments
A.1 - To improve the irrigation program's operational efficiency	A.1.1 - Increase of government-owned water service providers	A.1.1 - Increase of government-owned water service providers	++	85	1	Score is high because the government-owned water service providers are increasing their water service providers	The government-owned water service providers are increasing their water service providers. The government-owned water service providers are increasing their water service providers. The government-owned water service providers are increasing their water service providers.
OUTCOME A1							
A.2 - To increase the government's water service providers	A.2.1 - Increase of government-owned water service providers	A.2.1 - Increase of government-owned water service providers	++	85	1	Score is high because the government-owned water service providers are increasing their water service providers	The government-owned water service providers are increasing their water service providers. The government-owned water service providers are increasing their water service providers. The government-owned water service providers are increasing their water service providers.





Sustainable Water Integrated Management (SWIM) Support Mechanism



APPLICATION FOR THE PARTICIPATORY IRRIGATION MANAGEMENT (PIM) AND IRRIGATION MANAGEMENT TRANSFER (IMT) PROCESS M&E SYSTEM

Drafting and archiving comments for process enhancement/re-orientation

Z_ANWUA

Local office registry

OFFICIAL NAME OF ASSOCIATION:

OFFICIAL WUA CODE:

CHOOSE THE REGIONAL OFFICE RESPONSIBLE FOR THIS ASSOCIATION:

DETAILED INFORMATION

OFFICIAL ADDRESS INFORMATION

CITY: ZIPCODE:

STREET: CIVIC NUMBER:

President name:

Referent mail:

Referent phone:

Year in which the handing over agreement was signed:

If the equipped area of the WUA is part of a larger irrigation system please indicate the name of the larger system:

Record: 1 di 16

MONEEVAS MAIN MENU

National administrator

MONEEVAS

MONITORING & EVALUATION SYSTEM

PROGRAM SUB-SECTION

GENERAL SETTINGS	DATA UPDATE	REPORTING
<input type="button" value="PROJECT TIME SETTINGS"/>	Update frequency (months)	TIMESET
<input type="button" value="PROJECT CURRENCY SETTINGS"/>	<input type="text" value="12"/> <input type="text" value="36"/> <input type="text" value="72"/>	<input type="text" value="12"/> <input type="text" value="36"/> <input type="text" value="72"/>
<input type="button" value="SCORE SETTINGS"/>	<input type="button" value="ONCE IN THE PIM/IMT LIFE AT THE START"/>	<input type="button" value="ONCE IN THE PIM/IMT LIFE AT THE START"/>
<input type="button" value="USER PASSWORD SETTINGS"/>	<input type="button" value="ONCE IN THE PIM/IMT LIFE AT THE END"/>	<input type="button" value="ONCE IN THE PIM/IMT LIFE AT THE END"/>
<input type="button" value="REGIONAL OFFICE REGISTRY"/>	<input type="button" value="DATA RETRIEVE"/>	<input type="button" value="INDICATOR GRAPHICS AND DATA EXPORT"/>
<input type="button" value="LOCAL OFFICE REGISTRY"/>		<input type="button" value="VARIOUS"/>

During data input phase, it is also possible to add comments to encourage the enhancement/re-orientation process