

A photograph of the UNESCO-IHE building in Delft, The Netherlands. The building is a modern, multi-story structure with a light-colored facade and large windows. A tall flagpole stands in front of the building, flying a blue flag with a white wave pattern. The sky is a clear, deep blue. The text is overlaid on a semi-transparent white band across the middle of the image.

# Participatory Integrated Water Resources Planning

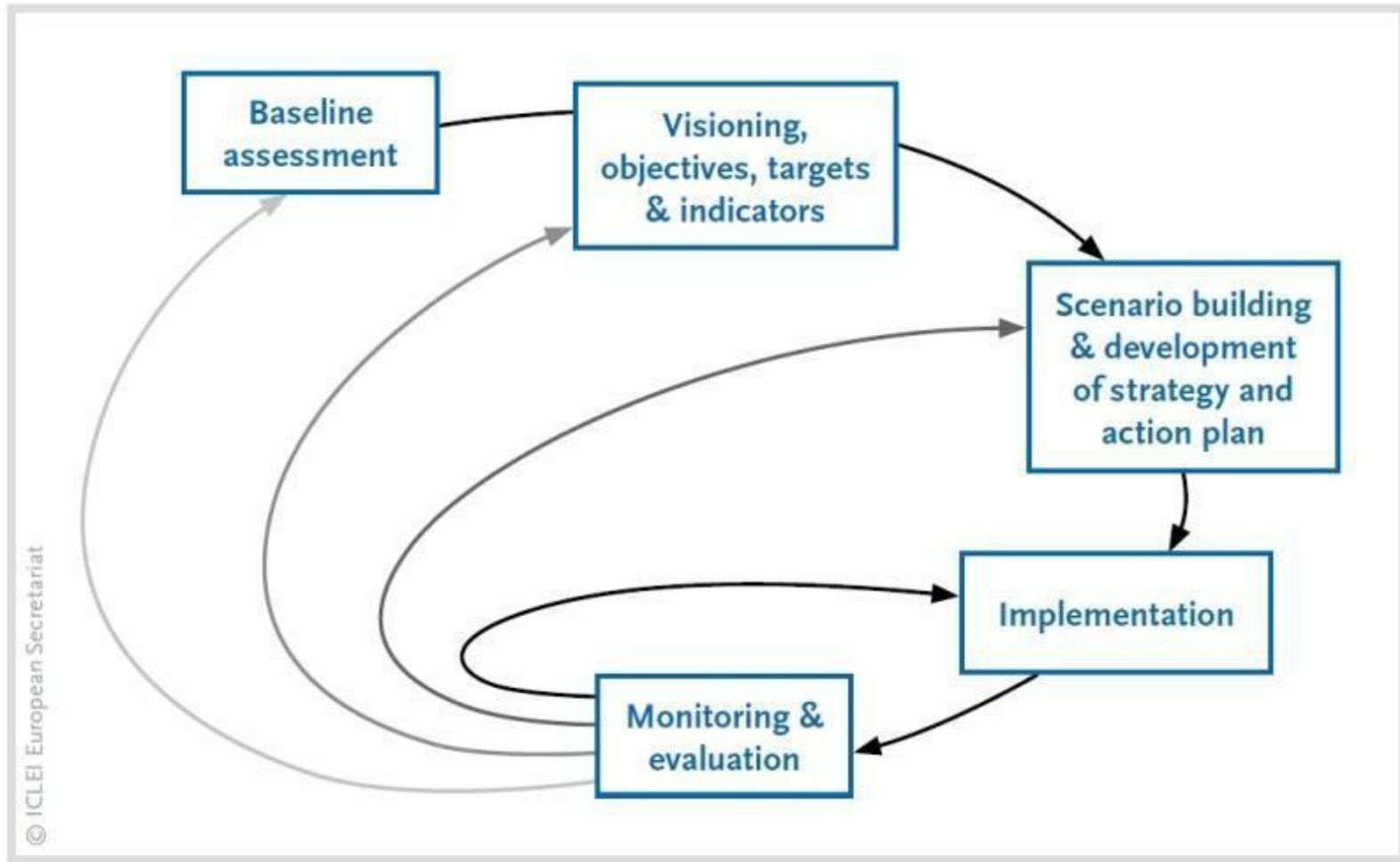
## Introduction

UNESCO-IHE, April 2013

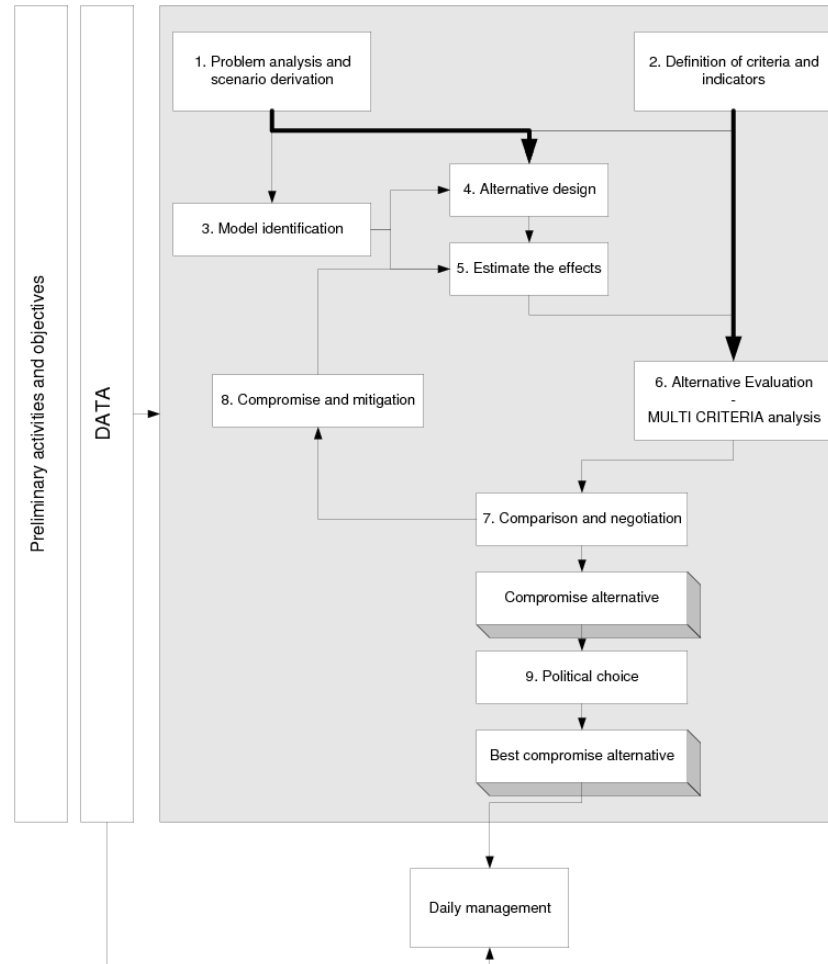
Nora Van Cauwenbergh, PhD

UNESCO-IHE INSTITUTE FOR WATER EDUCATION

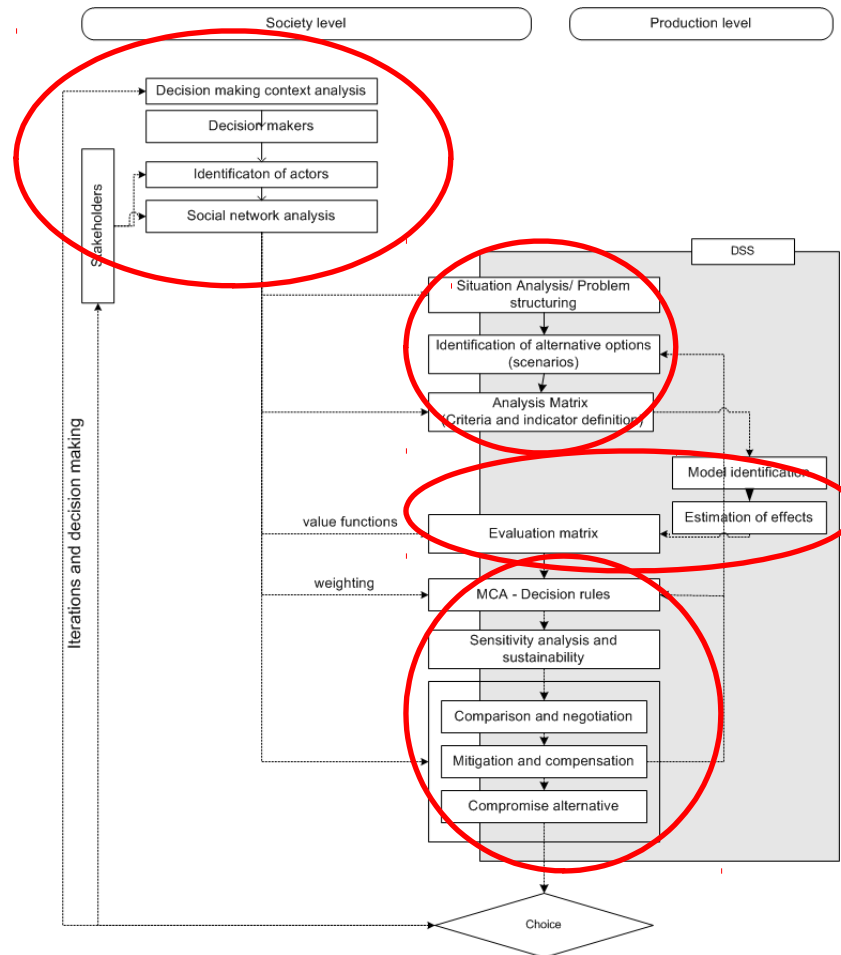
# Steps in the planning process



# Lecture scheme



# Lecture scheme



## Lecture scheme

Situation/stakeholder analysis	Introduction case study Andarax river basin
	Exercise on stakeholders
	Participatory situation/function analysis (1/2)
Objectives/criteria and alternatives	Structuring of problems (2/2) - exercise
	Link to policies/stakeholder and evaluation
	Formulation of action plan
	Scenario development and considerations
Evaluation (1+2)	Importance of indicators
	Models, quantification and uncertainty
	Cost recovery and responsibilities
Participatory tools and models	Participatory DSS
	Participatory MCA, negotiation and compensation
Guest lecture	Mekong case study + comparatives

## Materials and exercises

- Lecture note available
- Exercises per lecture
- Altaguax webpage (next week)

A photograph of the UNESCO-IHE Institute for Water Education building. The building is a modern, multi-story structure with a light-colored, textured facade and several windows. A tall flagpole stands in front of the building, flying a blue flag with a white emblem. The sky is a clear, deep blue. The text "UNESCO-IHE INSTITUTE FOR WATER EDUCATION" is visible on the building's facade.

**Questions?**

**UNESCO-IHE** INSTITUTE FOR WATER EDUCATION