



Guiding inspection activity from the pooling of data

UNESCO Meeting, Marseilles on 18/06/2013





Summary

Organize controls

Target the issues

Partners' data

Pooling is possible, examples

Make available



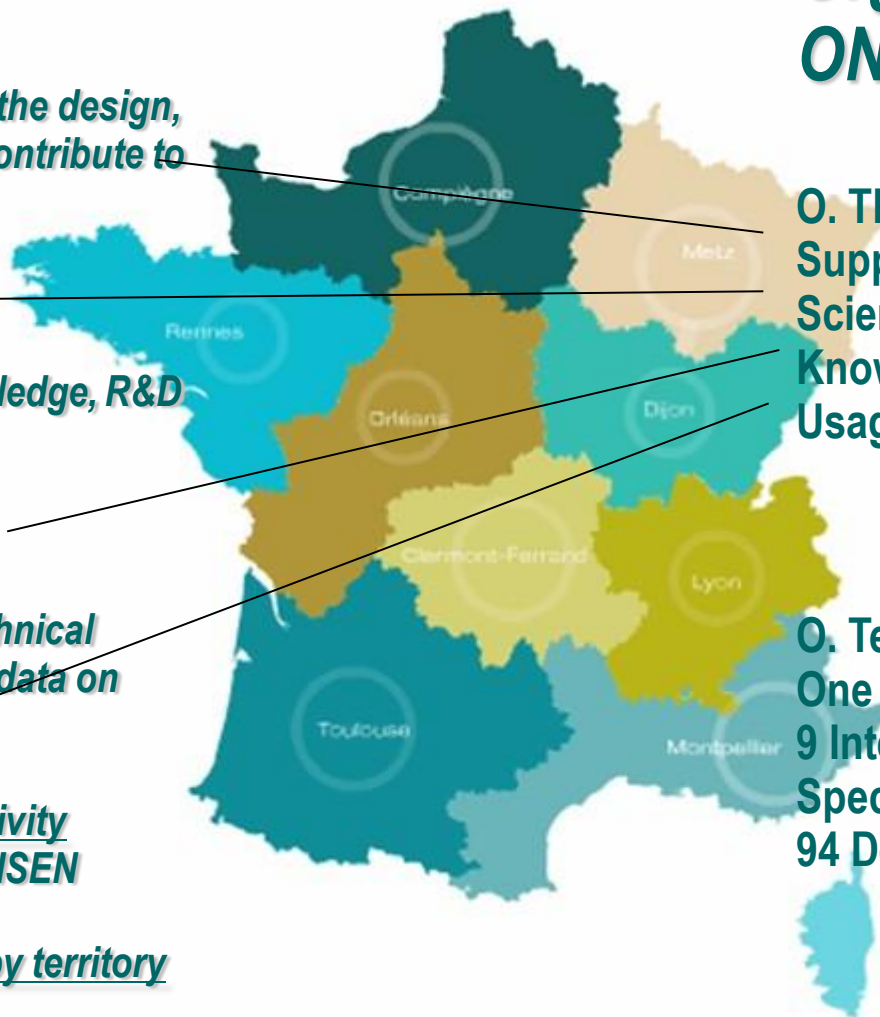
The role of ONEMA; => Ecological BE of MdOs

Support for water policies, support the design, participate in the implementation, contribute to the assessment of Water policies

Research, development and innovation;
facilitate the dissemination of knowledge, R&D closer to operational needs, boost innovation in water ...

Environmental knowledge;
Coordinate the SIE, consolidate technical standards, collect and disseminate data on water ...

Water Policy and MAs – 50% SD activity
Contribute to control plans in the MISEN context => control effectiveness
=> organize the issues by territory



Organization of ONEMA

O. Themes:
Support for water policy
Scientific research and action
Knowledge
Usage inspection

O. Territorial:
One Directorate General
9 Inter-regional delegations +
Specialized Unit
94 Departmental services

=> 900 agents



TARGET THE ISSUES; Policing of water and aquatic environments

Objective 14: Strengthen and expand progress

Development and deployment of concepts and methods - short for priority target setting directed to IG, regionalization and targeting the issues

Objective 15: Contribute to inspection plans as part of inter-service water and nature mission,




Implementation of inter-services complementarity, policing activities included in inspection plans geared towards achieving good water status

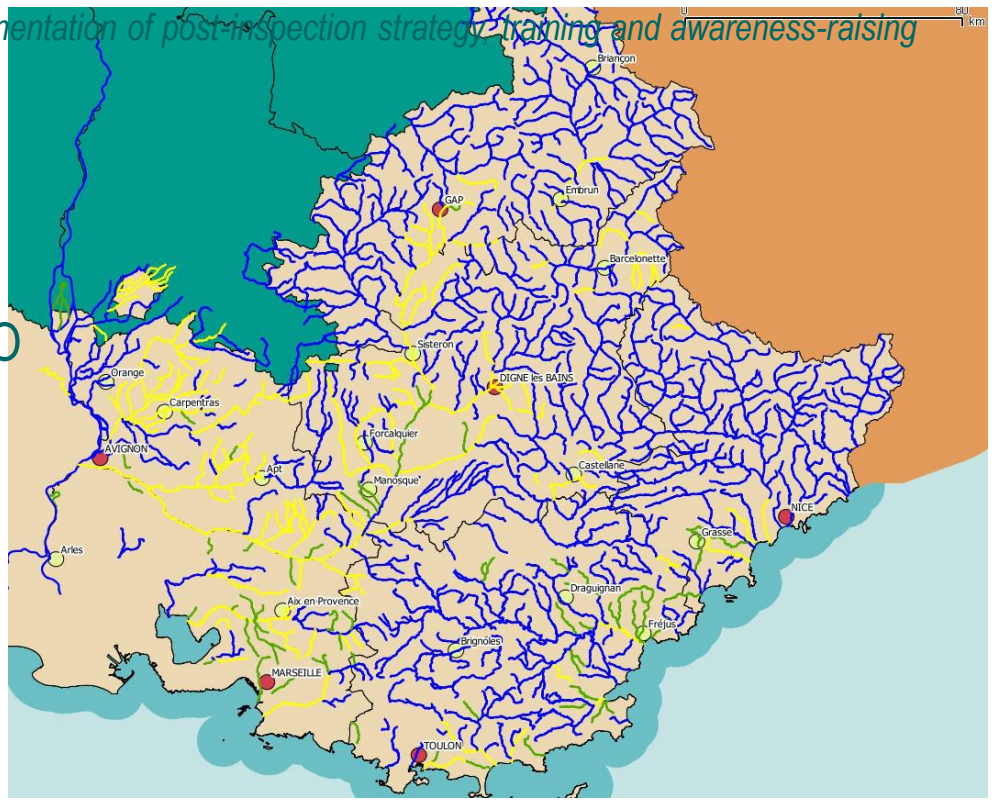
Objective 16: Contribute to more effective inspections

Association of public prosecutors with inspection strategy, implementation of post-inspection strategy, training and awareness-raising

=> Objective of non-degradation of water masses
Good Eco State in 2015 = 74% MdO

=> Objective of restoration of water masses

PACA Region	8,092 km MdO => 2015	
	2,226 km MdO => 2021	
	620 km MdO => 2027	



TARGET THE ISSUES; multi-annual inspection plan strategy

Themes over which ONEMA leads inspections;

Diffuse pollution – Fight against pollution by pesticides

Quantitative management – Observance of water restrictions

Continuity – Monitoring the operation of circulation works

Works on water courses – control during construction phase and end of works



Unfortunately, everything is both important and urgent!



Need for priorities and identification of challenged territories!!



The various players in Water Policing... with the core business of each ...

ONEMA – guides inspection plans and implements inspections
+ steers the SIE

DREAL – coordinates water policing at regional level, supports DDT



DDT / Prefecture – represent the interests of the State in a department / coordinates and implements inspections

Water Agency – organizes wealth allocation financially / contributes to monitoring

Public Prosecutor – exercises judicial policing / "orders" judicial police missions



Other – associations of users, professional groups,



Water is to be shared among all uses!

Uses are contradictory sometimes!!

Tensions may run high!!!

The resource is limited!!!!



 Guide inspections from data from many sources, many "data producers"

The project of the Eaufrance Portal ... and the associated databases

Eaufrance Portal= Hydrographic standard, access to reports, ...

Water Agency Portal= Status of MdOs

DREAL Portal= Protected territories

DDT / Ministry Portal= Pressures

ONEMA Data= knowledge of the
territory



Use map to visualize data

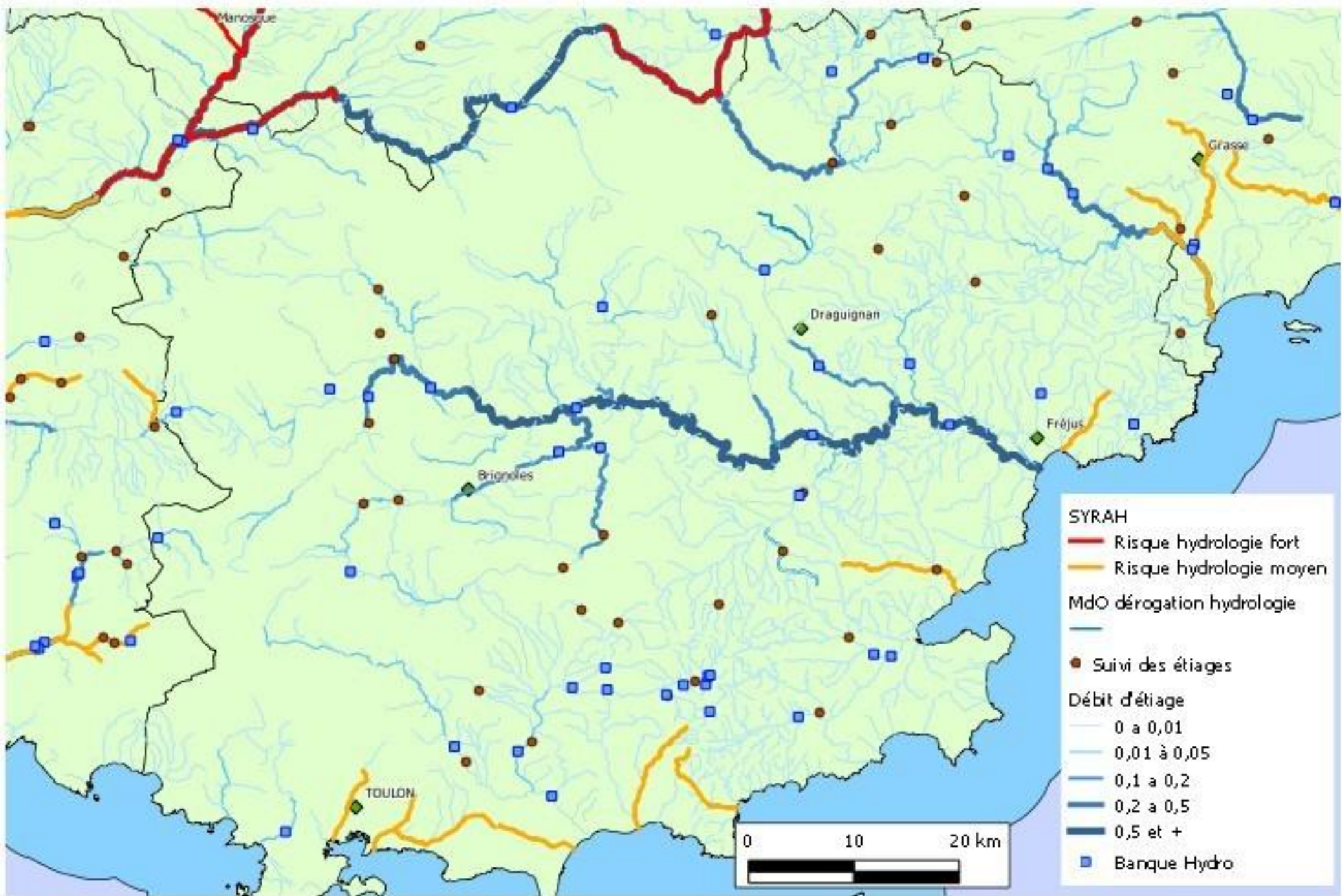


QUANTITATIVE MANAGEMENT Theme; water restriction

- SYRAH hydrology data = Water Agency / ONEMA
- Biological reservoir = DREAL
- Estimated rates of Low Flow = ONEMA / EauFrance
- Monitoring of Low Flow = ONEMA



Risque de perturbations hydrologiques et débit d'étiage

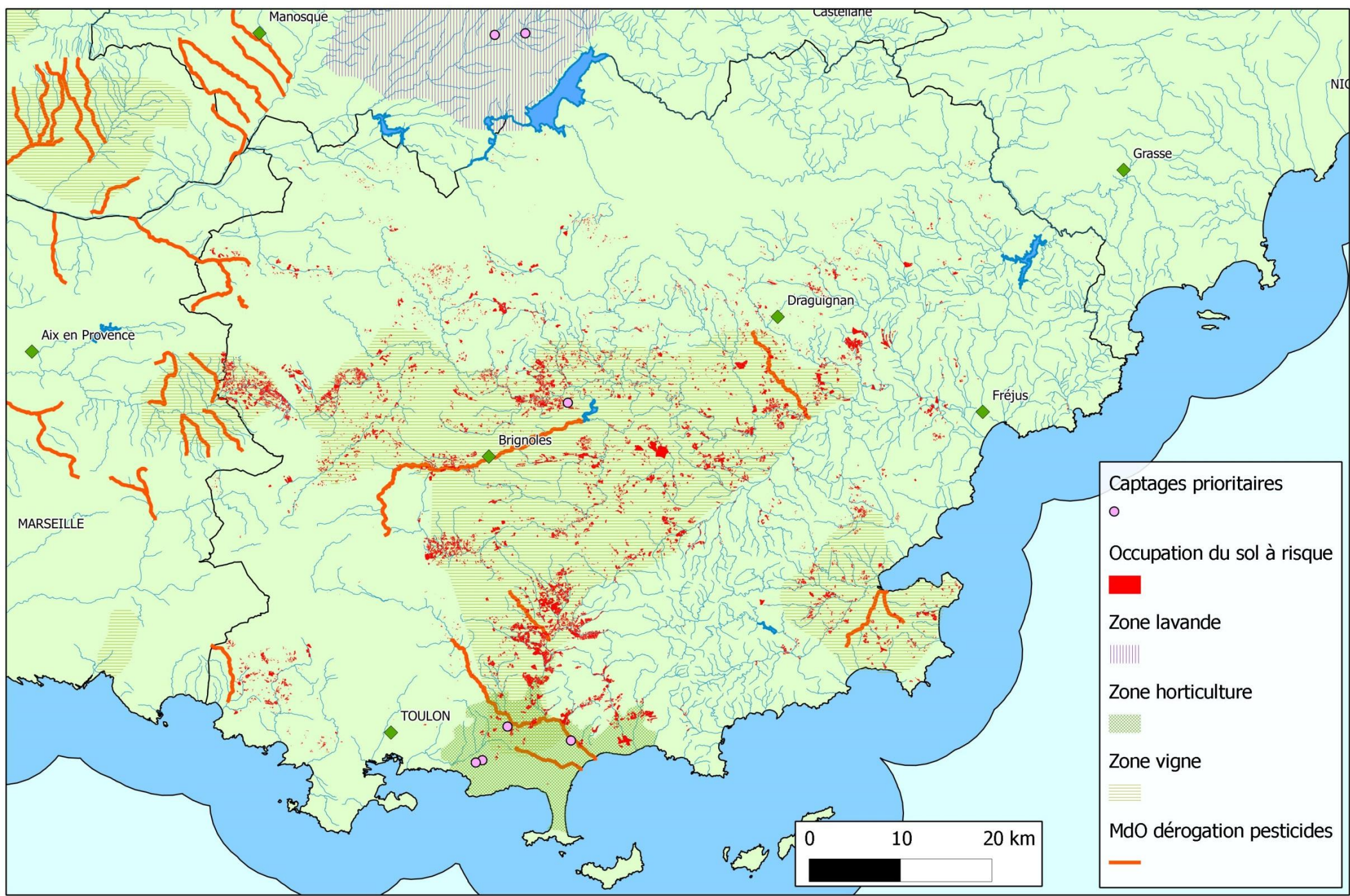


DIFFUSE POLLUTION Theme; respect for Untreated Zone

- Water mass in contravention of "pesticides"
= Water Agency
- Soil occupation / Land register
Chart = DDT / Ministry
- Priority catchment = ARS / Ministry



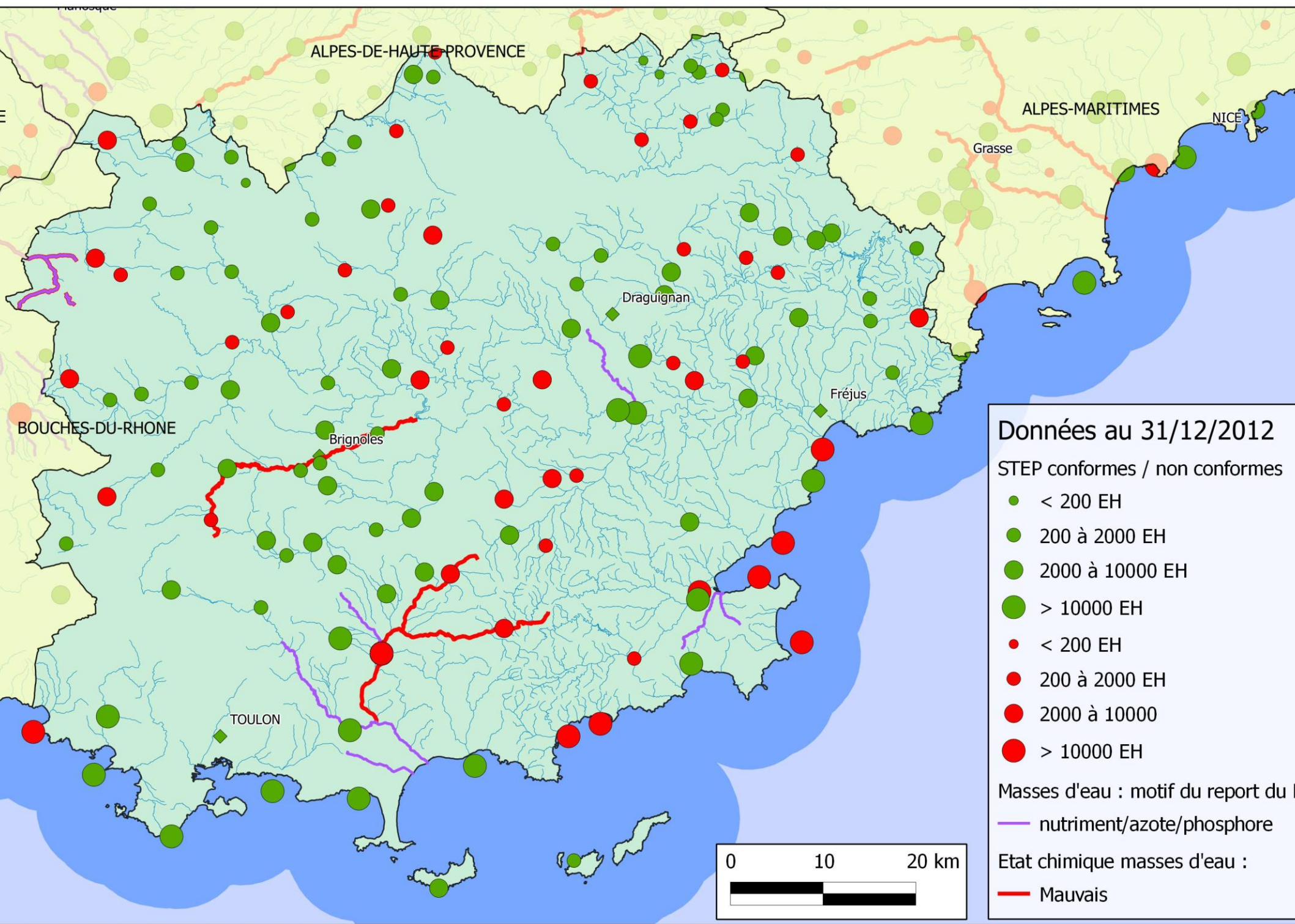
Occupation du sol et pollution diffuse



POINT-SOURCE POLLUTION Theme; Restoration issue

- Water mass in contravention of "pesticides"
= Water Agency
- Size and Compliance of Wastewater treatment stations
= DDT / Ministry
- Priority catchment = ARS / Ministry

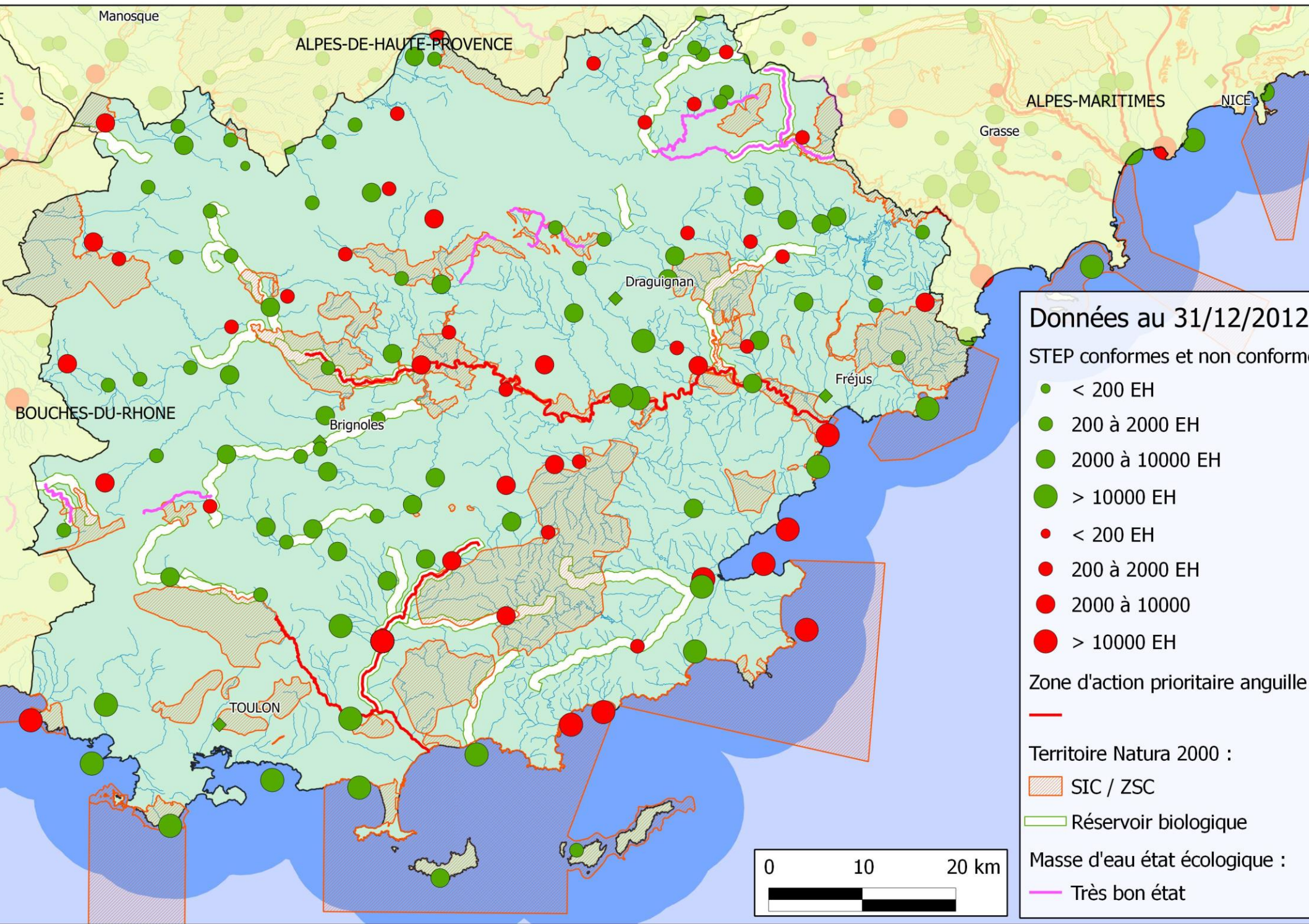




POINT-SOURCE POLLUTION Theme; "Non degradation" issue

- Water mass in TBE = Water Agency / DREAL
- Size and Compliance of Wastewater treatment stations
= DDT / Ministry
- Biological reservoirs = Water Agency
- Anguille Priority Action Zone / Territory
Natura 2000 = DREAL / Ministry





Make available data cross-checking ...

=> Implement departmental "paper" atlas

[example of atlas](#)

=> Implement "Carmen" interactive maps

[example of CARMEN map](#)

=> Encourage data producers to enable downloading of their data

so that anyone may use and crosscheck data linked to water

Thank you for your attention and have a nice stay in our region

Thank you for your attention and have a nice stay in our region



eaufrance